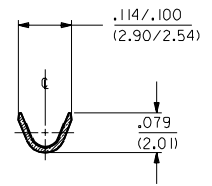
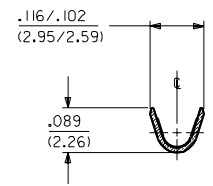
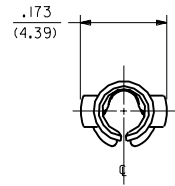


PART NO.	ENG. NO.
02-09-1138	2871-A(P90 I)
02-09-1139	2871-A(P90 I)L
-	-
-	-
-	-



SECTION "A-A" SECTION "B-B"

LEGEND

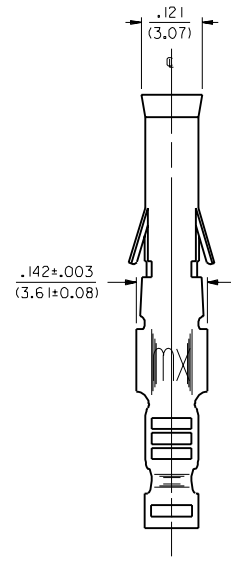
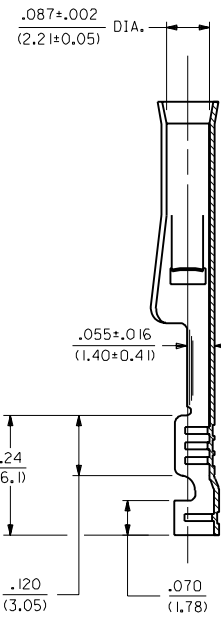
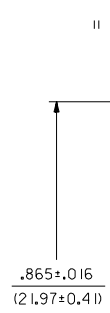
2871-A(\*\*\*\*)\*

FORM  
BLANK=STD. CHAIN  
L=LOOSE

P=PREPLATE  
BLANK=POSTPLATE

FINISH CODE

- NOTES:
1. TERMINAL FOR USE WITH .093/(2.36) SERIES HOUSINGS AND WILL ACCEPT 22 - 24 AWG WIRE.
  2. INSERTION FORCE: 3.5 LBS. MAX. WHEN TERMINAL IS INSERTED INTO AN .093 SERIES HOUSING.
  3. CONTACT RETENTION: 20 LBS. MIN. FROM HOUSING.
  4. THIS PART CONFORMS TO PRODUCT SPEC. 02-09.

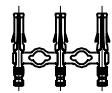


SECTION "C-C"

MATERIAL:  
CARTRIDGE BRASS, ALLOY #C26000,  
.010/(0.25) THICK, SPRING TEMPER

FINISH CODES:  
901 HOT TIN DIP .000020/(0.00051) MIN.

CHAIN FORM  
FULL SCALE



B	REVISE PER ECR US 0799 GC 2/14/95	RW
A	FINAL RELEASE ECR US 0857 GC 6/11/92	RW

DIMENSIONS SHOWN METRIC (INCH)		▽ = 0	▽ = 0	REVISE ONLY ON CAD SYSTEM	
UNLESS OTHERWISE SPECIFIED TOLERANCES: ANGULAR ± 1/2°		TITLE CRIMP TERM., FEMALE .093/(2.36) DIA. FOR 22 - 24 AWG WIRE			
3 PLACE	± .010	---	---	SHEET NO.	DATE
2 PLACE	± .014	± 0.25	---	1 OF 1	6/11/92
1 PLACE	---	± 0.36	---	MOLEX INCORPORATED U.S.A.	
DRAFT WHERE APPLICABLE MUST REMAIN WITHIN DIMENSIONS		PART NO. SD-2871-*			
DRWG. BY GWF	CHKD. BY RW	FILE NAME SD2871X1	THIS DRAWING CONTAINS INFORMATION THAT IS PROPRIETARY TO MOLEX INC. AND SHOULD NOT BE USED WITHOUT WRITTEN PERMISSION.		
APP'D.	SCALE 6 : 1	DWG. NO.	DRWG. NO.	DIV.	SIZE
				CP	C